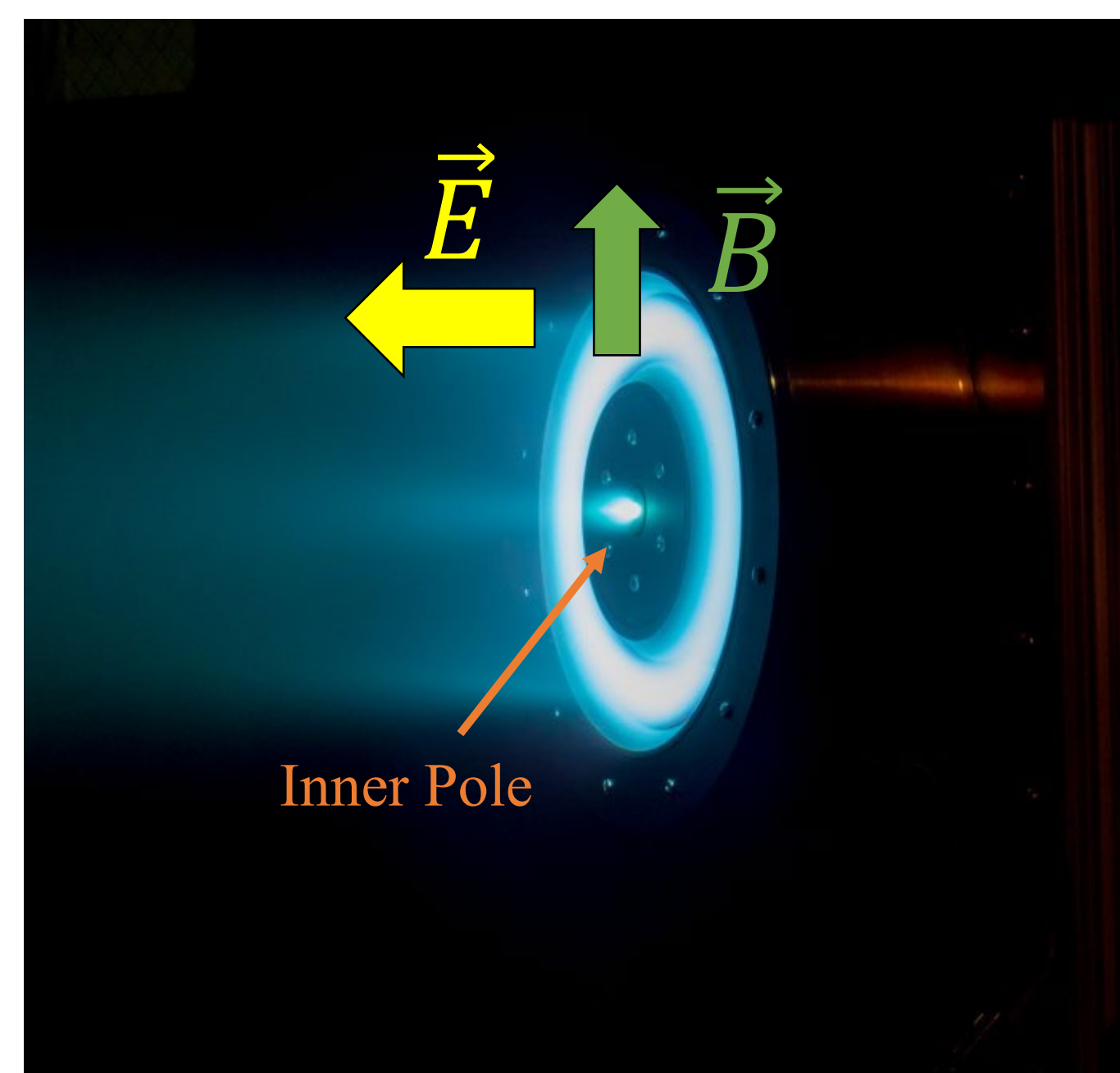


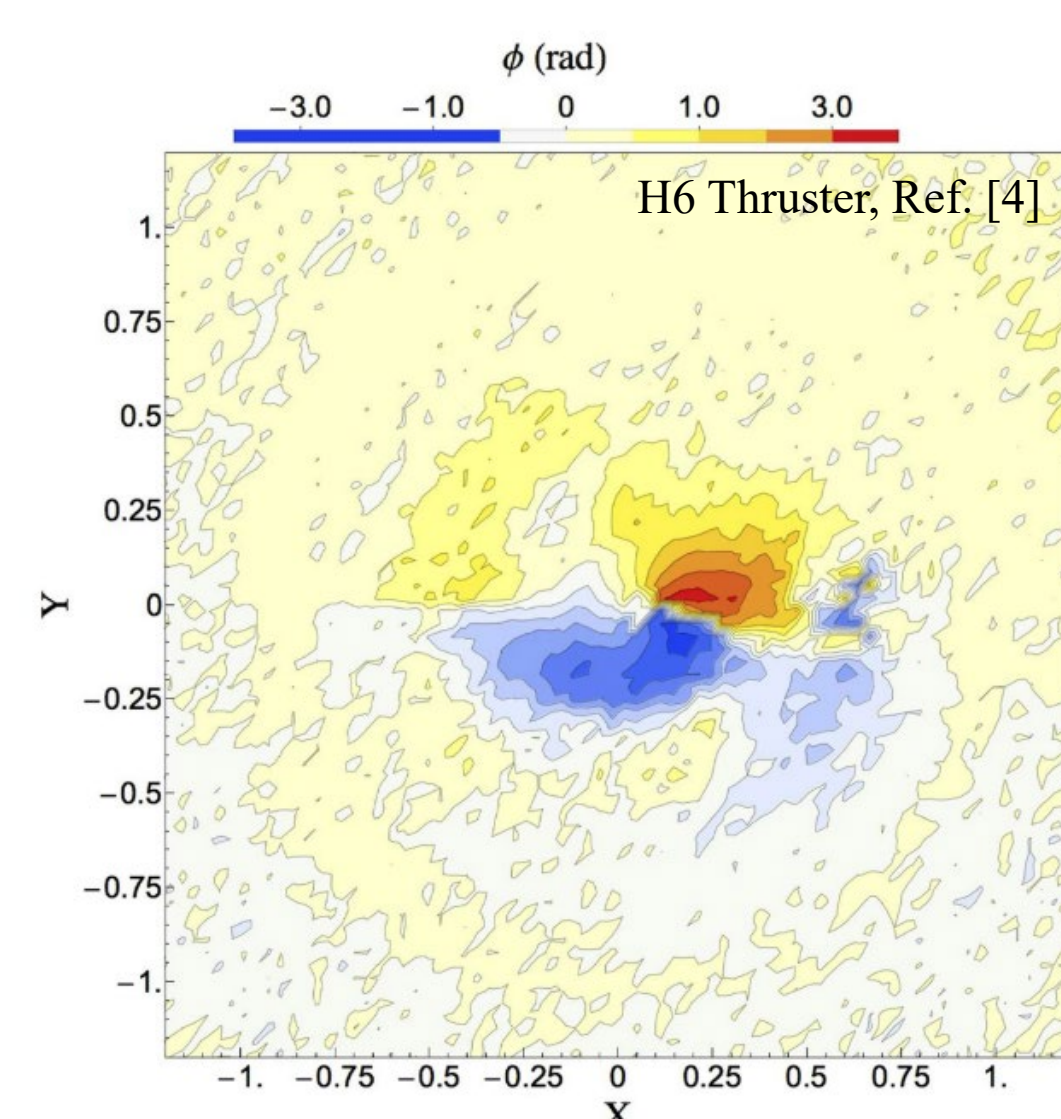
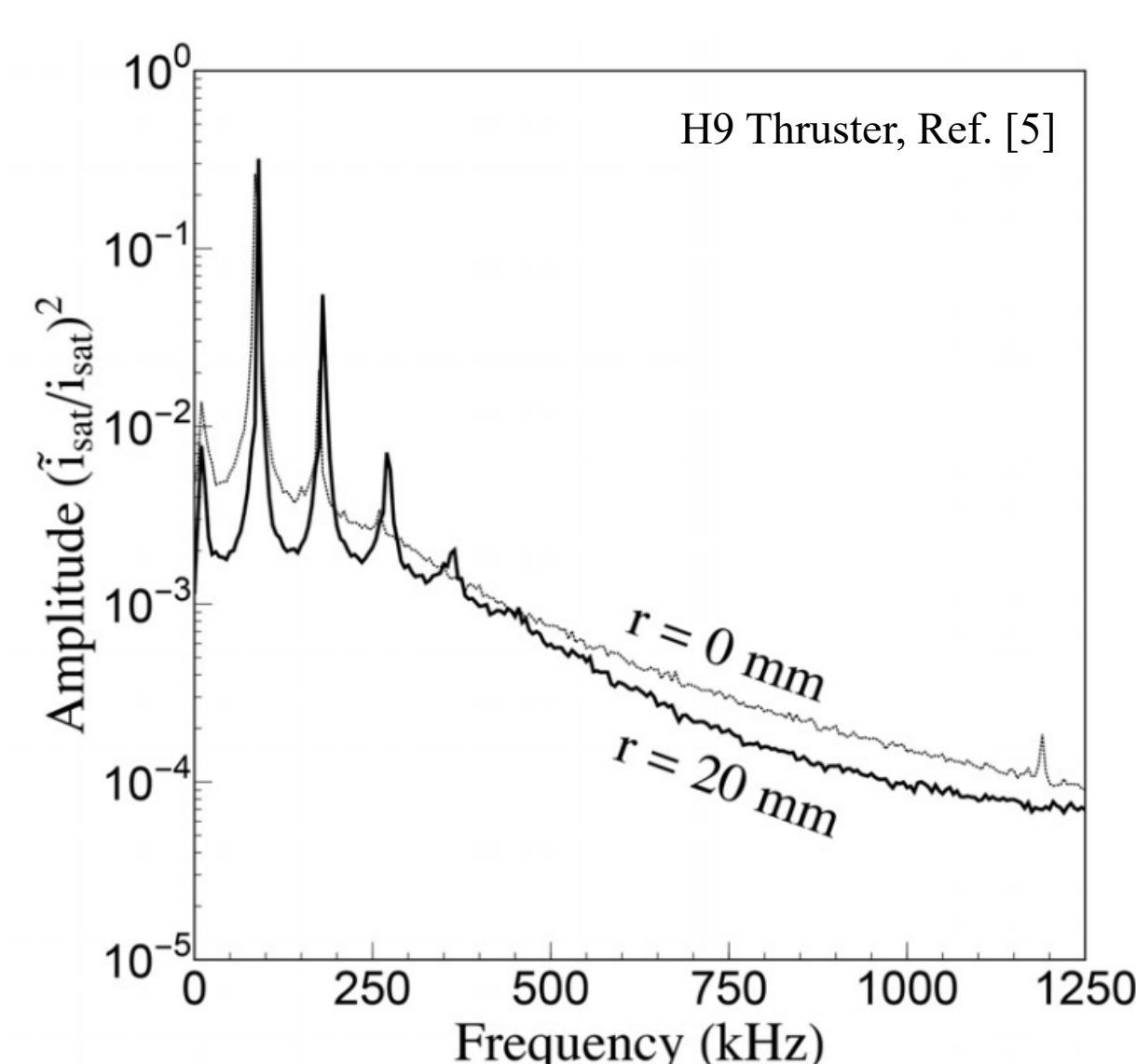
Motivation: Pole Erosion



- Hall Thrusters with magnetic shielding exhibit erosion of their inner front pole, potentially limiting device lifetime [1].
- This pole erosion has been tied to anomalously large ion temperatures near the pole [2].

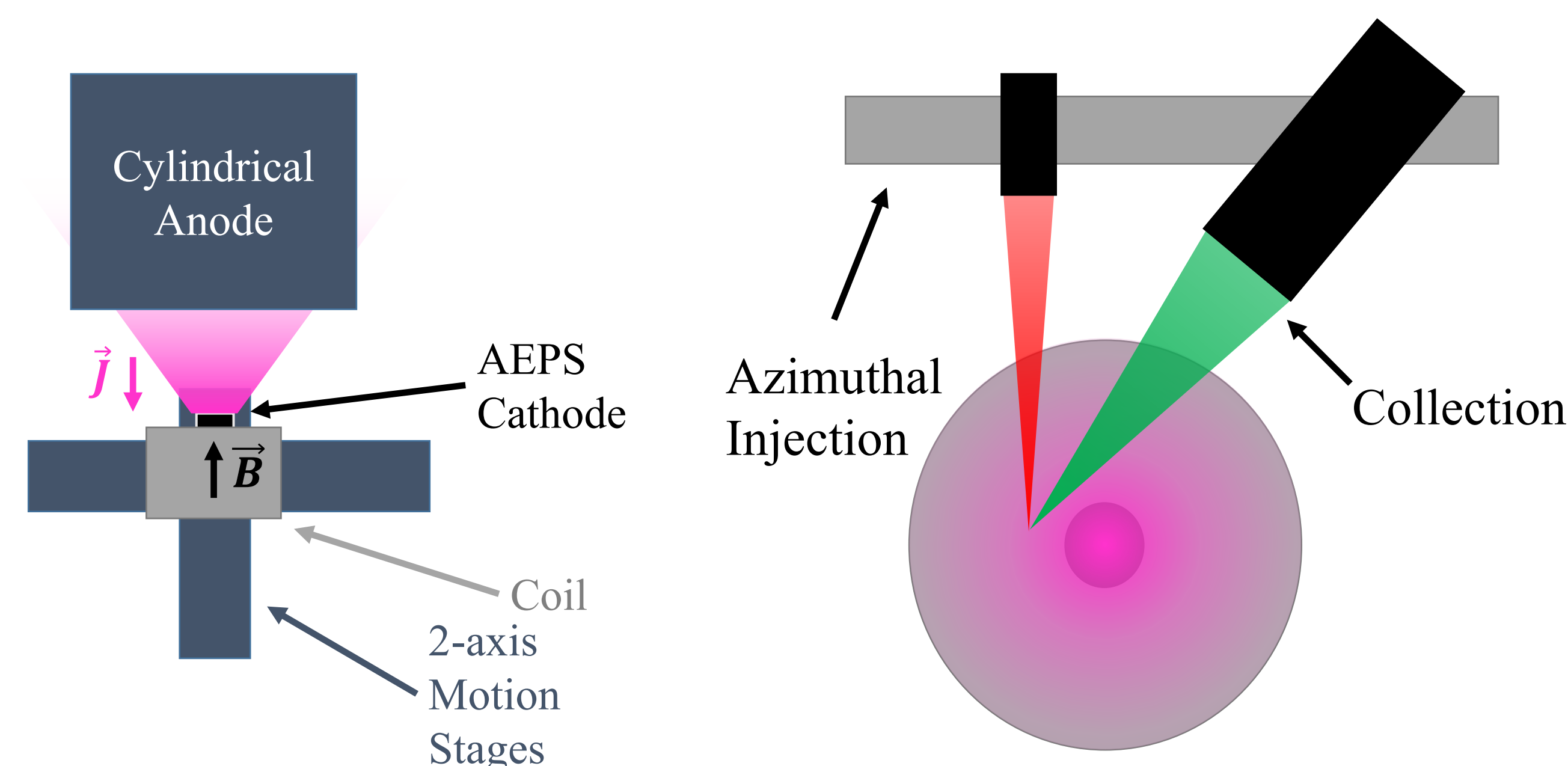
- Lower-hybrid plasma waves have been proposed as a mechanism for this anomalous ion heating [3].
- However, it is possible that other lower-frequency plasma waves also contribute to ion heating near the magnetic poles.

Azimuthal Cathode Waves



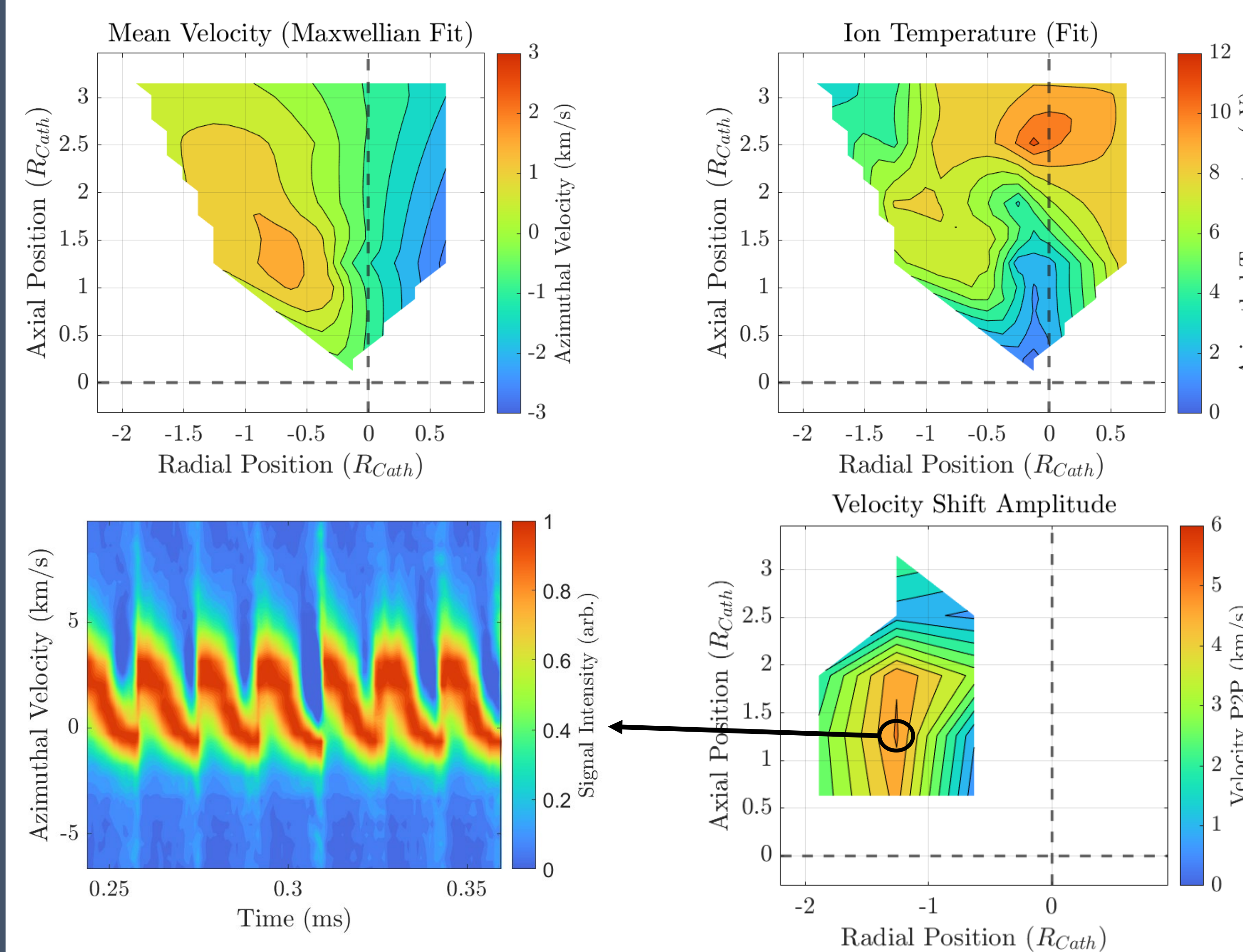
- Prior studies have demonstrated azimuthal waves (~100 kHz) in magnetized Hall thruster cathodes [4,5].
- These waves were identified with a gradient-driven fluid instability which sources energy from diamagnetic electron drift.
- Such waves could accelerate and heat ions.

Time-Resolved LIF



- We measured the gradient-driven cathode mode in the Advanced Electric Propulsion System (AEPS) hollow cathode with a magnetic field to mimic Hall thruster operation at the Jet Propulsion Laboratory.
- We used laser-induced fluorescence (LIF) velocimetry with a transfer-function averaging approach [6] to measure the time-resolved azimuthal ion velocity distribution.

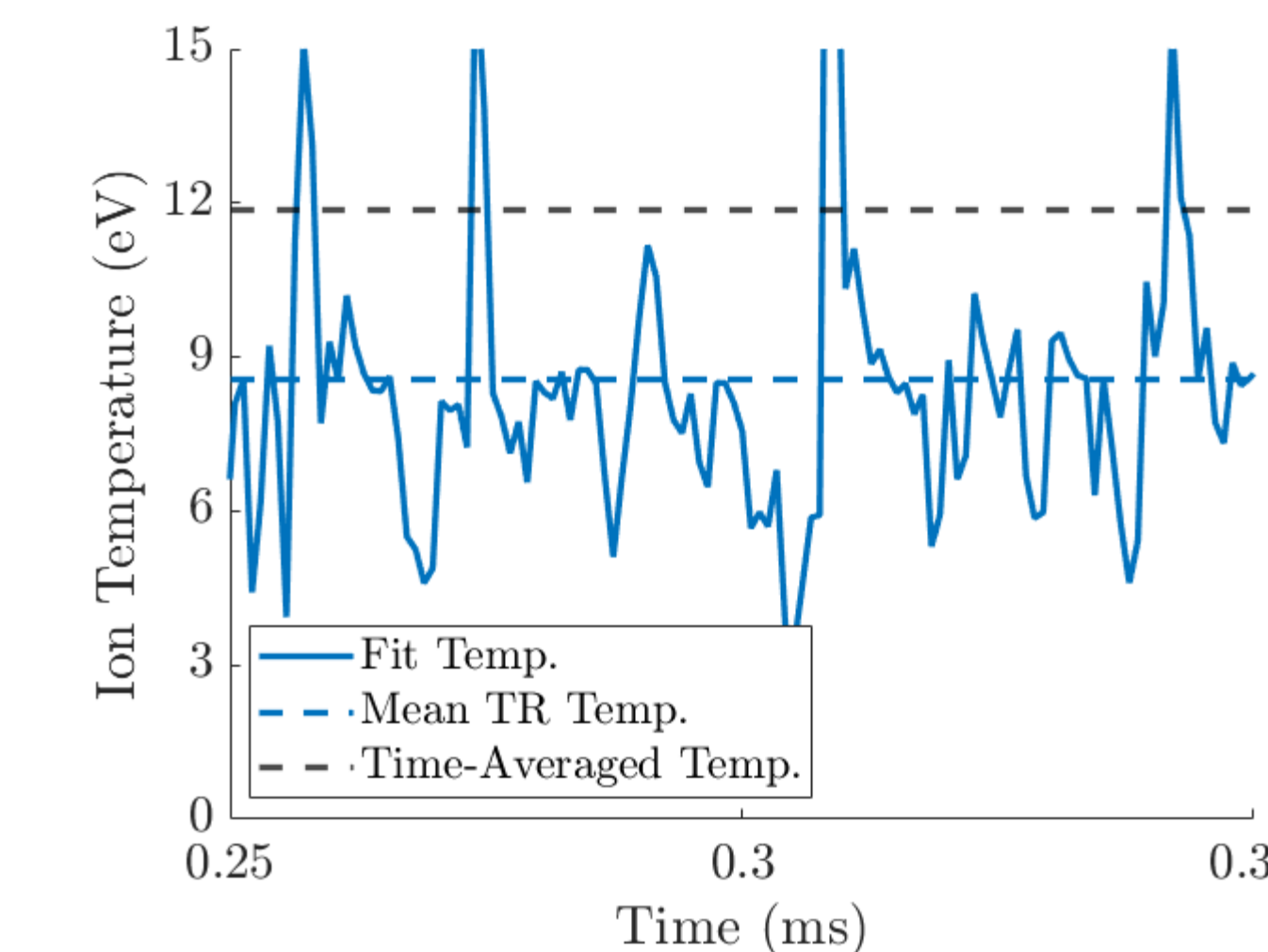
Results



(Dimensions normalized to cathode keeper radius)

Discussion

- Ions are accelerated to a time-averaged swirl velocity of 1-2 km/s, with time-averaged ion temperature of ~8-10 eV.
- Time-resolved LIF reveals large coherent waves (60 kHz) which shift the mean velocity of the ion distribution.
- The amplitude of these ion oscillations are localized off-centerline near the cathode exit.
- The time-averaged ion temperature appears larger than the instantaneous temperature by ~3 eV due to the wave effect.



Conclusions

- In a standalone cathode, gradient-driven waves contribute to moderate ion acceleration and heating, but the energies involved are not large enough to fully explain pole erosion.
- Future studies will repeat similar measurements in a full Hall thruster discharge to characterize the impact of this azimuthal ion heating on sputtering yield models.

References

[1] Mikellides, I. G., Lopez Ortega, A., & Jorns, B. (2014). Assessment of Pole Erosion in a Magnetically Shielded Hall Thruster. *50th AIAA/ASME/SAE/ASEE Joint Propulsion Conference*, AIAA-2014-3897. <https://doi.org/10.2514/6.2014-3897>

[2] Lopez Ortega, A., Mikellides, I. G., Chaplin, V. H., Huang, W., & Frieman, J. D. (2020). Anomalous Ion Heating and Pole Erosion in the 12.5-kW Hall Effect Rocket with Magnetic Shielding (HERMeS). *AIAA Propulsion and Energy 2020 Forum*, AIAA-2020-3620. <https://doi.org/10.2514/6.2020-3620>

[3] Mikellides, I. G., & Lopez Ortega, A. (2021). Growth of the lower hybrid drift instability in the plume of a magnetically shielded Hall thruster. *Journal of Applied Physics*, 129(19), 193301. <https://doi.org/10.1063/5.0048706>

[4] Jorns, B. A., & Hofer, R. R. (2014). Plasma oscillations in a 6-kW magnetically shielded Hall thruster. *Physics of Plasmas*, 21(5), 053512. <https://doi.org/10.1063/1.4879819>

[5] Jorns, B. A., Cusson, S. E., Brown, Z., & Dale, E. (2020). Non-classical electron transport in the cathode plume of a Hall effect thruster. *Physics of Plasmas*, 27(2), 022311. <https://doi.org/10.1063/1.5130680>

[6] Durot, C. J. (2016). Development of a Time-Resolved Laser-Induced Fluorescence Technique for Nonperiodic Oscillations. University of Michigan.